

Washer extractor

W4850H

Features and benefits

- Clarus Control® – programmable microprocessor with 9 fixed and up to 192 programs to allow free programming
- High extraction for efficient dewatering
- Frequency-controlled motor for optimal washing
- Supplied with 8 + 5 signals for liquid detergents
- Eight connections for liquid detergents
- Large door opening for easy loading and unloading
- All critical parts made from stainless steel to provide a high level of corrosion resistance
- Powder painted galvanised steel side panels
- Bearing seals lubricated with oil to ensure a long service life. Empty container alarm
- Direct steam heating.
- Low noise level for pleasant working environment
- Designed for easy servicing and maintenance

Main options

- Forward or forward/backward tilting with full reversing function
- Noise/heat insulation
- Test tap with level tube
- Two drain valves for recovering water/wash solution
- Five-compartment detergent box for powder detergent (located at the front or on the right hand side of the machine)
- Third water valve
- Large water valves
- Integrated weighing system (IWS)
- Connection for intelligent detergent system (DMIS)
- Connection to CMIS



| Main specifications | | W4850H |
|---|-----------------------|----------------|
| Max. capacity | kg/lb | 90/200 |
| Drum, volume | litre/ft ³ | 850/30 |
| diameter | ø mm/inch | 1220 / 48 1/16 |
| Extraction | rpm | 720 |
| G-factor | | 350 |
| Heating alternatives | steam | x |
| | non-heated | x |
| | electricity | - |
| Consumption data "Normal 60°C" * | | |
| Total time (cold+hot/cold) | min | 40/45 |
| Water consumption (cold/hot) | litre | 425/125 |
| | gallon | 112/33 |
| Energy consumption (motor/heating) | kWh | 2.3/- |
| Steam consumption (cold/hot) | kg/lbs | 10/22 |
| Steam consumption (cold) | kg/lbs | 19/41.9 |

* With filling factor 1:10. Water temperature 59°F cold water and 149°F hot water.

| Electrical connections | | | | | |
|------------------------|------------------------------|----------|------------------|----------------|--------------------|
| Heating alternative | Main voltage | | Heating power kW | Total power kW | Recommended fuse A |
| | | Hz | | | |
| Steam or Non heated | 208-240V 3 ~ 400/480V 3 ~ | 60 60 | - - | 6.3 6.3 | 30 15 |

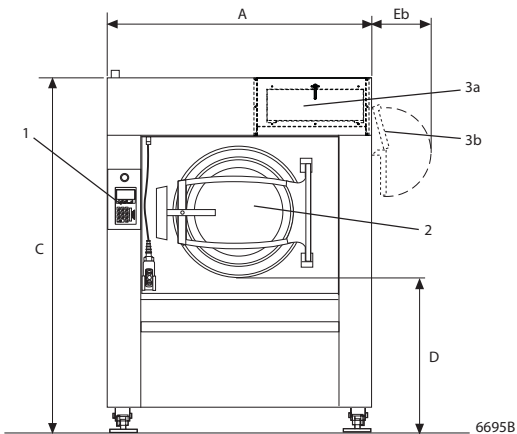
| Water, steam and air connections | | | W4850H |
|---|--|--|----------------------|
| Water valves | | inch | 1 1/4 |
| Rec. Water pressure | | psi | 30-90 |
| Function limits for water valve | | psi | 10-145 |
| Capacity at 300 kPa | | l/min / gallon/min | 150/37 |
| Drain valve | | Ø mm/inch | 110 / 4 5/6 |
| Draining capacity | | l/min / gallon/min | 400/100 |
| Steam valve | | inch | 1 1/4 |
| Rec. Steam pressure | | psi | 7-40 |
| Function limits for steam valve | | psi | 8-120 |
| Compressed air | | inch | 1/8 |
| Air pressure | | psi | 30-60 |
| Air consumption | | l/h / gallon/h | 20/5 |
| Five-compartment detergent injector | | inch | 3/4 |
| Floor requirements | | | |
| Frequency of the dynamic force | | Hz | 12.0 |
| Floor load at max extraction | | kN | 25.9 ± 1.5 |
| | | lbs force | 5830 ± 340 |
| Sound levels | | | |
| Sound power/pressure level at extraction* | | dB(A) | 87/70 |
| Sound power/pressure level at wash* | | dB(A) | 71/54 |
| With insulation | | dB(A) | < 70 |
| Heat emission | | | |
| % of installed power, max 90° | | | 6.7 |
| Shipping data** | | | |
| Shipping volume | | net, kg/lbs m ³ /ft ³ | 2200/4850 7.6/269 |

* Sound power levels measured according to ISO 60704.

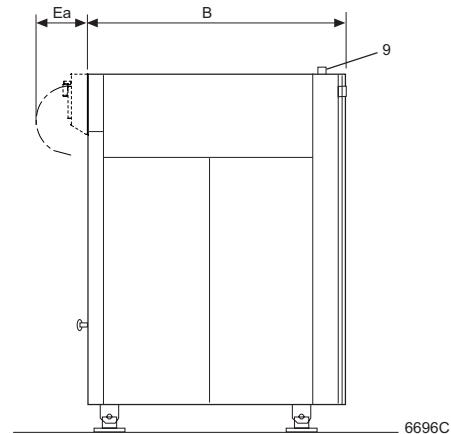
** Average data. Crated weight/shipping volume depends on configuration. Please contact logistics for exact measures.

| Dimensions in mm/inch | W4850H |
|------------------------------|-------------------|
| A Width | 1640 / 64 9/16 |
| B Depth | 1635 / 64 3/8 |
| C Height std/tilt+IWS | 2190/2230 |
| D std/tilt+IWS | 86 1/4 / 87 13/16 |
| | 955/995 |
| | 37 5/8 / 39 3/16 |
| Ea | 300 / 11 13/16 |
| Eb | 380 / 14 15/16 |
| F std/tilt+IWS | 2095/2135 |
| | 82 1/2 / 84 1/16 |
| G | 1070 / 42 1/8 |
| H | 830 / 32 11/16 |
| I | 635 / 25 |
| K | 445 / 17 1/2 |
| L | 1140 / 44 7/8 |
| M std/tilt+IWS | 1620/1660 |
| | 63 3/4 / 65 3/8 |
| N std/tilt+IWS | 395/435 |
| | 15 9/16 / 17 1/8 |
| O | 820 / 32 5/16 |
| P | 2410 / 94 7/8 |
| R | 1175 / 46 1/4 |
| S | 2480 / 97 5/8 |
| T | 960 / 37 13/16 |
| U | 285 / 11 1/4 |
| V | 400 / 15 3/4 |

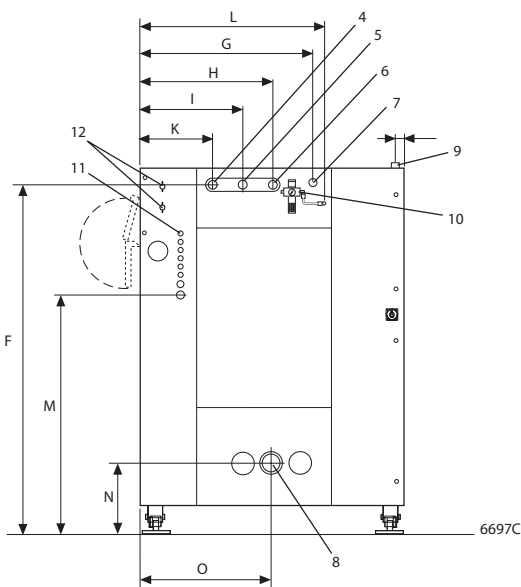
- 1 Control panel
- 2 Door opening \varnothing 700 / 27 9/16 inch
- 3a Five-compartment detergent box, front (optional)
- 3b Five-compartment detergent box, right hand side (optional)
- 4 Cold water connection
- 5 Hot water connection
- 6 Third water connection (optional)
- 7 Steam connection
- 8 Drain
- 9 Electrical connection
- 10 Compressed air connection
- 11 External liquid detergent injector, 6 pcs \varnothing 10, 1 pc \varnothing 16 and 1 pc \varnothing 20
- 12 Water connection, detergent injector (optional)



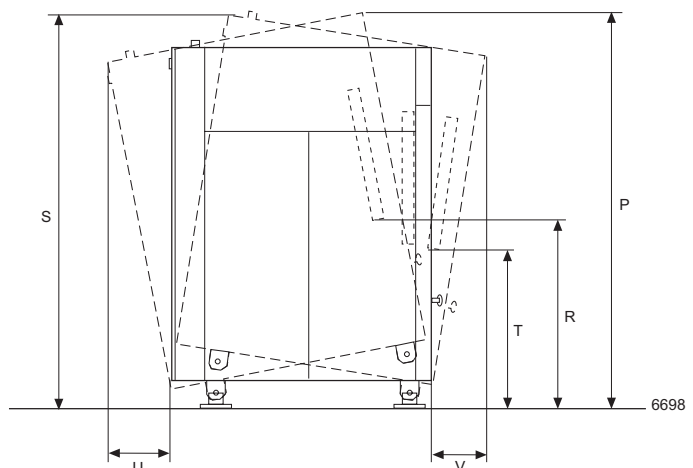
Front



Right side



Rear side



The movement when tilting

Options

- Forward or forward/backward tilting with drum reversal – makes unloading into a trolley easy.
- Noise/heat insulation – reduces airborne noise to less than 70 dB(A).
- Test tap with level tube – allows you to take samples from the wash solution.
- Water/wash solution recovery system – two drain valves allow you to recover rinse water and re-use it in the wash.
- Five-compartment detergent box.
 Option 1, (5x1 litre), located on front of the machine.
 Option 2, (5x2 litres), located on right hand side of the machine.
- Water inlet via pump – additional water inlet for water via pump from recovery system.
- Third water valve – electrically-controlled water valve for hard water.
- Steam connection components.
- Connection components for 2 water connections.
- Connection components for 3 water connections.
- Pump inlet connection components. Recovery
- Integrated weighing system (IWS)
- Connection for intelligent detergent system (DMIS).
- Large water valves (DN 50 / 2" BSP) (DN 40 / 1 1/2" BSP).
- May be included in a hands-off system.
- Kit for connection to CMIS (Certus Management Information Systems) network.

Accessory

- WPM PC program. Allows the creation of wash programs on a PC and their transference to the machine via a memory card.



CMIS can be fitted to washer extractors with Clarus Control, tumble dryers with Selecta Control and ironers with electronic control system. All you need to access and view the statistical feedback is a normal PC.